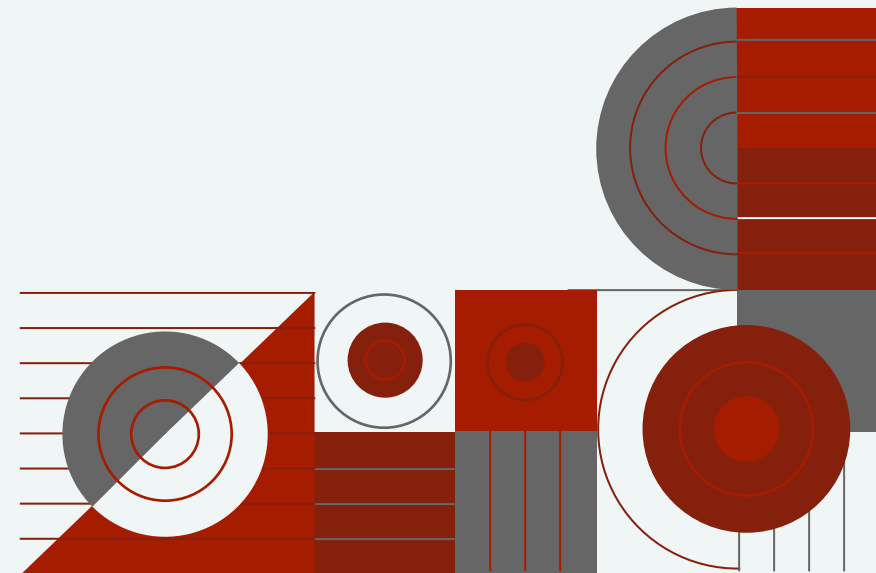


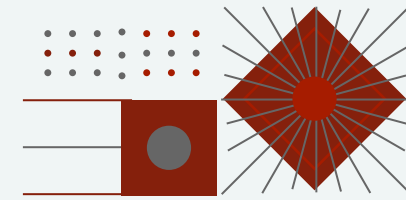


Best Practices in Planning Professional Learning

Belmont Ridge Middle School
Leesburg, VA
2022

© 2022 All Rights Reserved Loudoun County Public Schools





Agenda

01

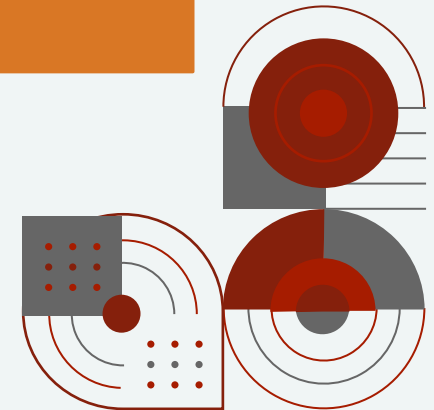
OUR JOURNEY

02

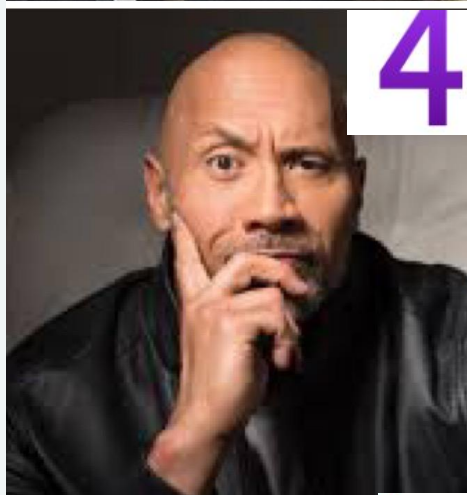
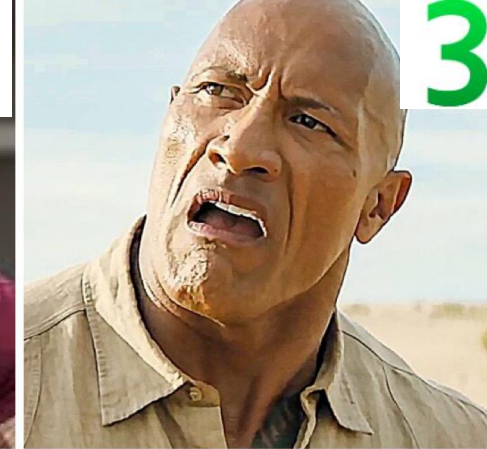
PROFESSIONAL
LEARNING
FRAMEWORK

03

QUESTIONS



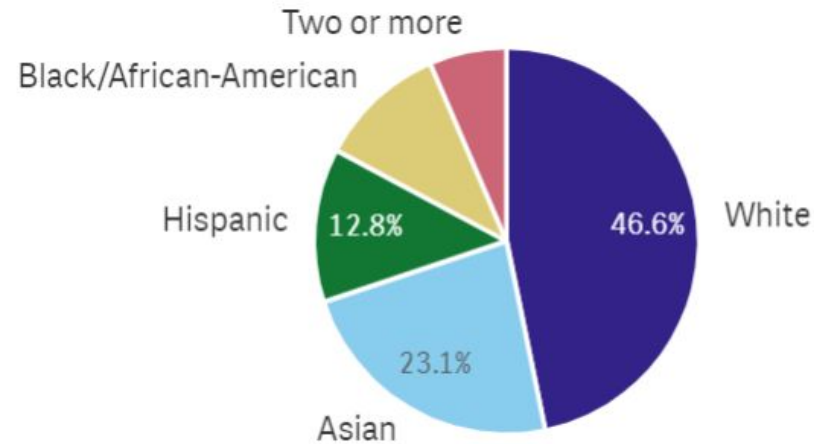
Which Dwayne "The Rock" Johnson are you?



School Profile

1,056
students

Enrollment by Ethnicity/Race (2021-2022)



*“Empowering all students to
make meaningful
contributions to the world.”*

*Excellence
by
Example*

Our Story.....



- How do WE - think - communicate - collaborate - create - contribute in a responsible way?
- How do WE create an environment for student learning and development?

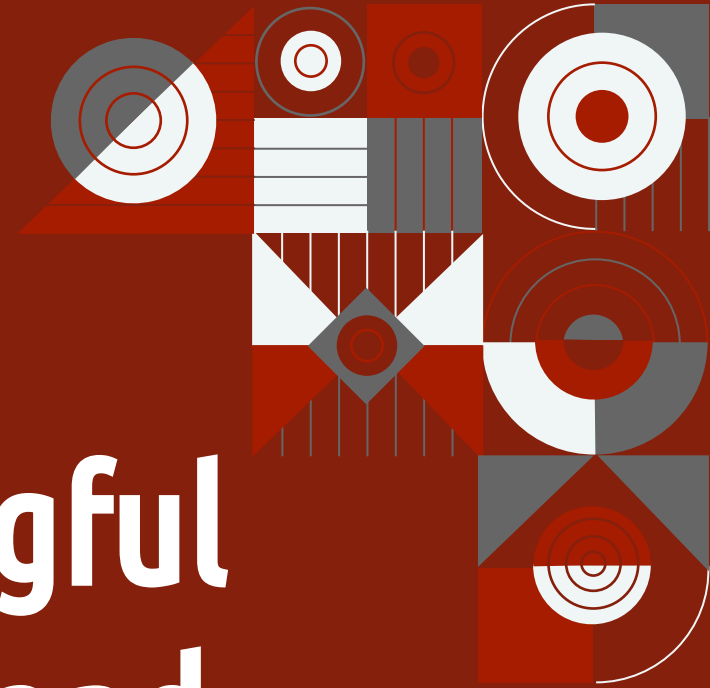
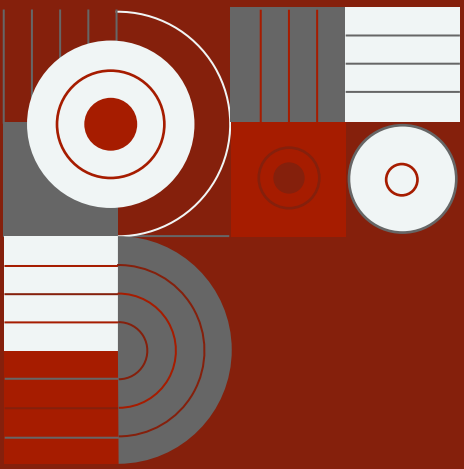


Our Story.....

Professional Learning Framework

Goal is to support staff in providing school campus and classroom learning environments that will foster each student's ability to:

- **THINK CRITICALLY**
- **COMMUNICATE**
- **COLLABORATE**
- **CREATE**
- **CONTRIBUTE IN A RESPONSIBLE, RESPECTFUL WAY**



How do we make meaningful connections in our work and our professional learning to our middle school mission...

The image features a dark red background with white text. In the top-left and top-right corners, there are decorative geometric patterns composed of various shapes like circles, squares, and rectangles in shades of white, grey, and red. The central text is a question: "How do we keep our goals front and center in our professional learning?"

**How do we keep our
goals front and center in
our professional
learning?**

Our 3 Areas of Focus

**Challenging
and
Empowering
Academics
(CLT)**



**PBL
Strategy Sharing**

*Data

**Developmental
Responsiveness
(IT)**



***The
Successful
Middle School
Book Study***

*reflection

Social Equity
(whole staff, small
group, independent)



**Culturally
Responsive
Framework**
*Playlist
*EIC Trainings
*Gorski's 20

Goal Work and MLP Moment

What is the desired outcome? What would support you getting there?

Academic Excellence:

B day blocks $\frac{3}{4}$ and $\frac{7}{8}$ will deepen their understanding of themes through story plot and character analysis and relating thematic insights to real world context as evidenced by a variety of assessments.

Developmental Responsiveness:

My objective is to have developed a deeper and more comprehensive understanding of the middle school student and to have applied knowledge as it relates to promoting student self-advocacy.

Social Equity:

My goal is to have an increased understanding of issues related to social equity and to have applied new learning as it relates to fostering equitable teaching practice.

STW Framework in Action

CLTs / Academic Excellence

- Authenticity and Essential Questions
- Shifts in Practice
- CS Standards
- Rigor

ITs / Developmental Responsiveness

“What does developmental responsiveness mean to us?”

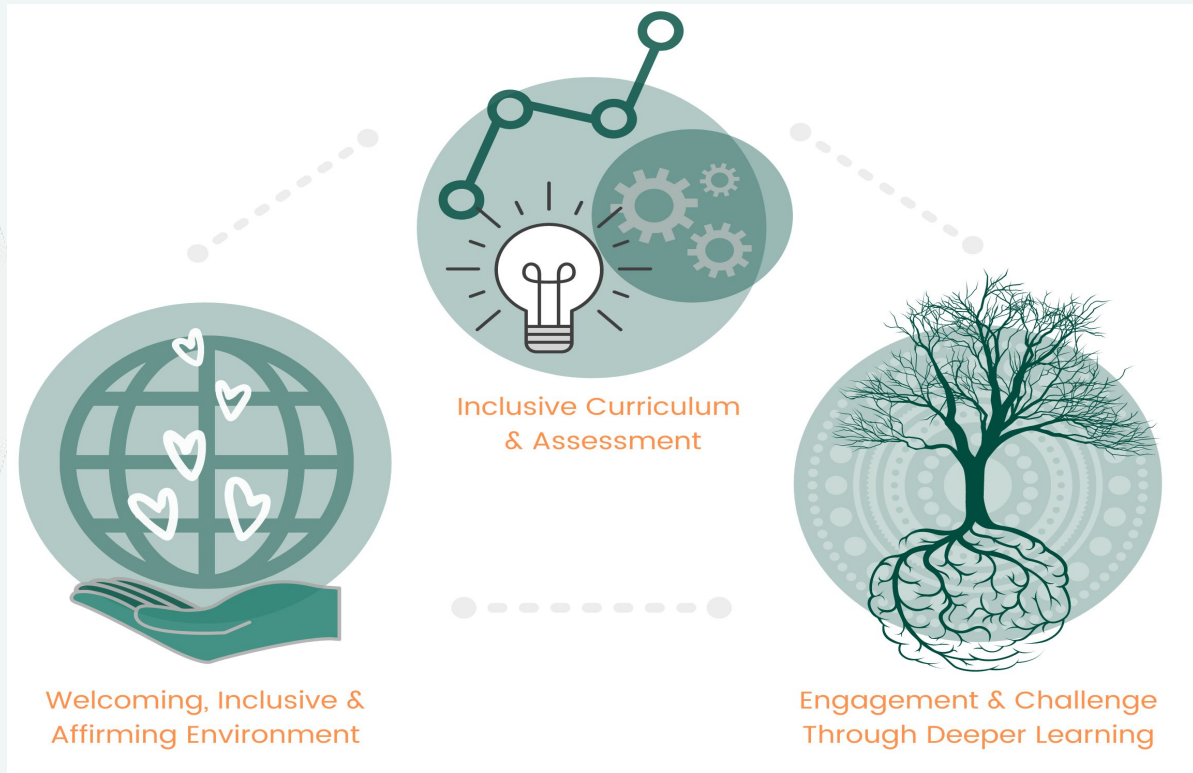
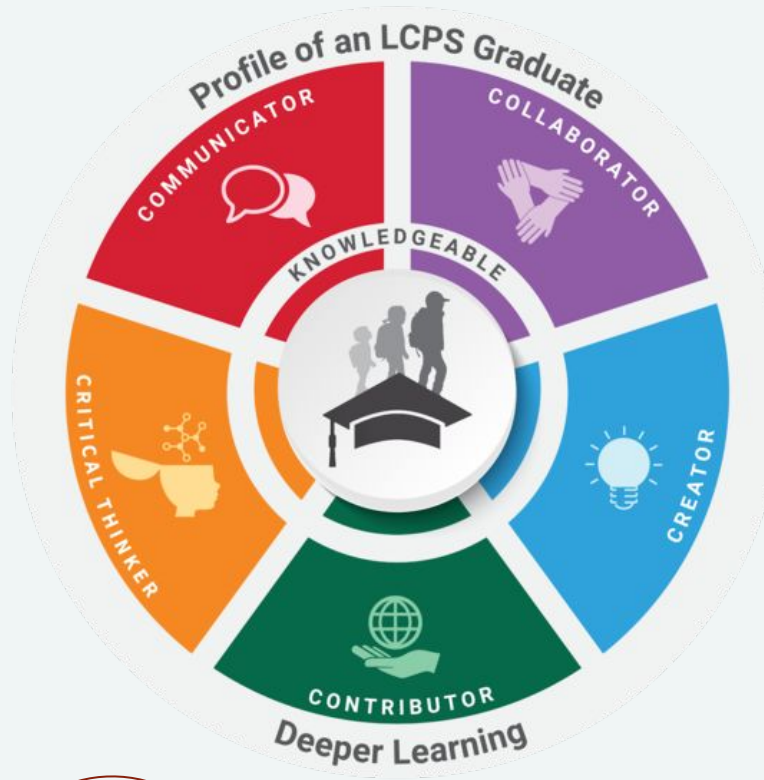
- PBIS and SEL
- Tiered Support System

Whole Staff / Equity

- Countywide PD
- Staff Playlist



Academic Excellence- Pathways to Deeper Learning



Academic Excellence- Pathways to Deeper Learning

Gold Standard PBL

Seven Essential Project Design Elements

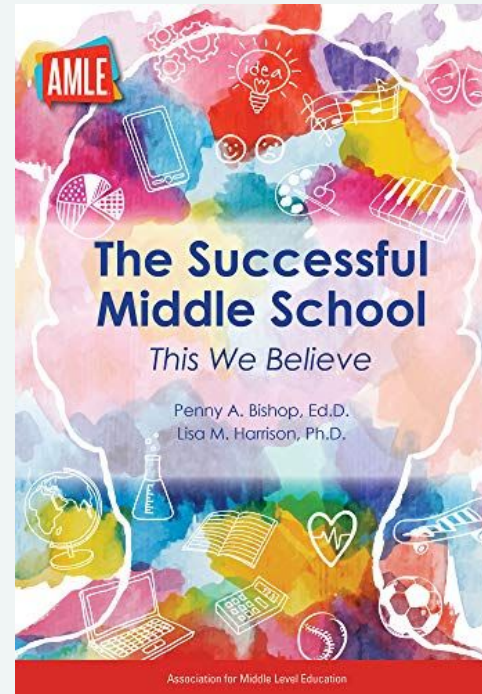


Personalized Learning and the Core 4



Developmental Responsiveness

	CLASSROOM	CAFETERIA	HALLWAYS
<p>...We are RESPECTFUL</p>	<p>Make learning a priority</p> <p>Practice kindness</p>	<p>Leave it better than you found it</p> <p>Speak with inside voice</p>	<p>Practice patience</p> <p>Walk distraction free</p>
<p>...We are RESPONSIBLE</p>	<p>Arrive with what you need</p> <p>Do your best</p>	<p>Raise hand to leave seat</p>	<p>Walk on the right side</p>
<p>...We are READY TO LEARN</p>	<p>Ask questions</p> <p>Actively participate</p>	<p>Refuel: Eat lunch & hydrate</p> <p>Build positive relationships</p>	<p>Stow materials for transport</p> <p>Move with purpose</p>



Social Equity

Our WHY



NO INSULTS related to ability, appearance, culture, gender, home language, race, ethnicity, religion, or social class will be tolerated.



Equity Book Study

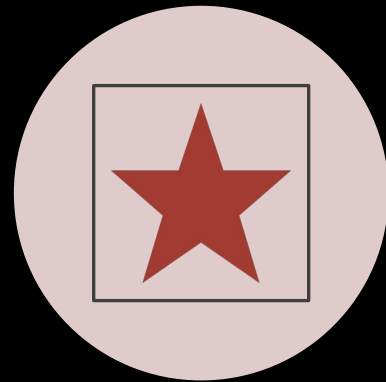
BEMS: April 2021

Considerations

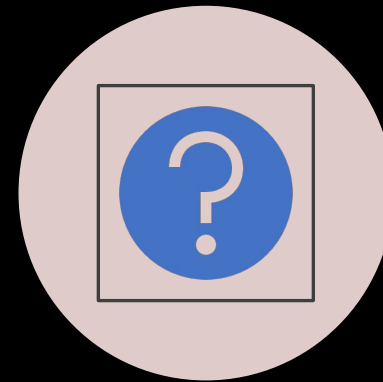
- **Recognize that learning is a lifelong process**
- **PD sessions open opportunities for consistent staff check-ins from learning to encourage small shifts along the way**
- **Keep things simple**
- **Continually assess instructional practice**
- **Always be prepared to pivot with keeping the end in mind**



Share Your Thoughts



WHAT RESONATED
WITH YOU?

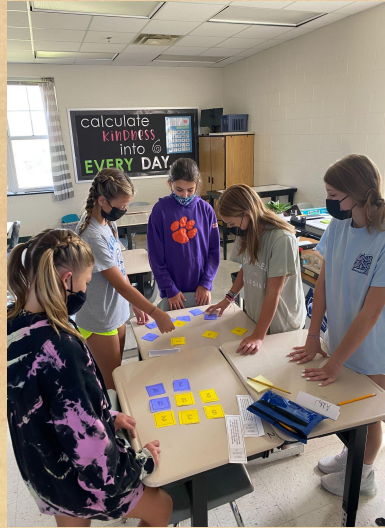
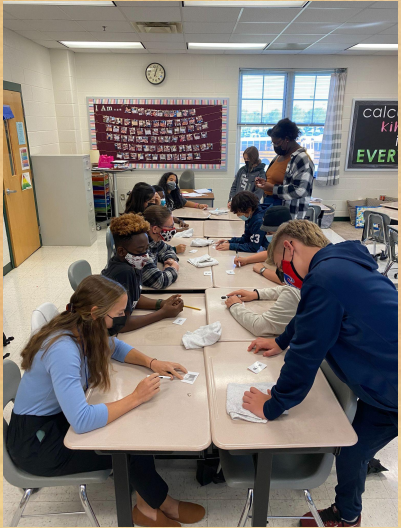


WONDERINGS

If we teach today's students
as we taught yesterday's,
we rob them of tomorrow.

-John Dewey

Thank You!



Credits.

Presentation Template: [SlidesMania](#)

Images: [Unsplash](#)

Fonts used in this presentation: Ubuntu Condensed and Catamaran

