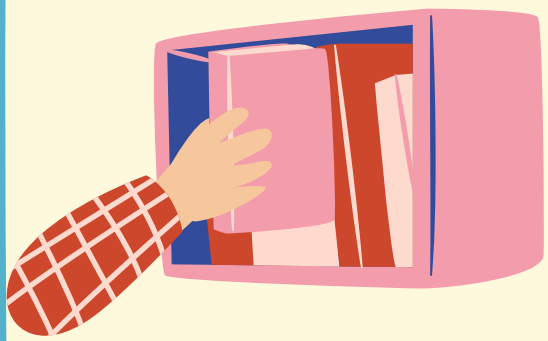


Success Guide

SEL - Creating Belonging



Identify the behaviors and emotions in the room. Giving them a name helps to validate feelings, open a conversation, and alert students that you are aware of what's going on.



Use every resource available! You are not alone. Connect with the guidance professions in your school, colleagues, families, paraprofessionals, coaches, and mentors.



Lead with compassion. Chances are good that we see only the tip of the iceberg in our classrooms. SEL needs may be bigger and deeper than we realize. Take time to listen and to respond.



Provide a range of ways for students to speak up. Ask how people are doing. Explore exit tickets, journals, hand signals, suggestion boxes, 1:1, small groups, and being available before or afterschool.



Community comes from intentionality. Be purposeful in your groupings, seating charts, and instructional design. Adjust your teaching based on the needs of the students.